

Skimikin - East Part

Contours - 5 m
Scale - 1:15000



**SAGE
ORIENTEERING
CLUB**

SAFETY BEARING

SOUTH to Skimikin Lake Road

DESCRIPTIONS

40 POINTERS

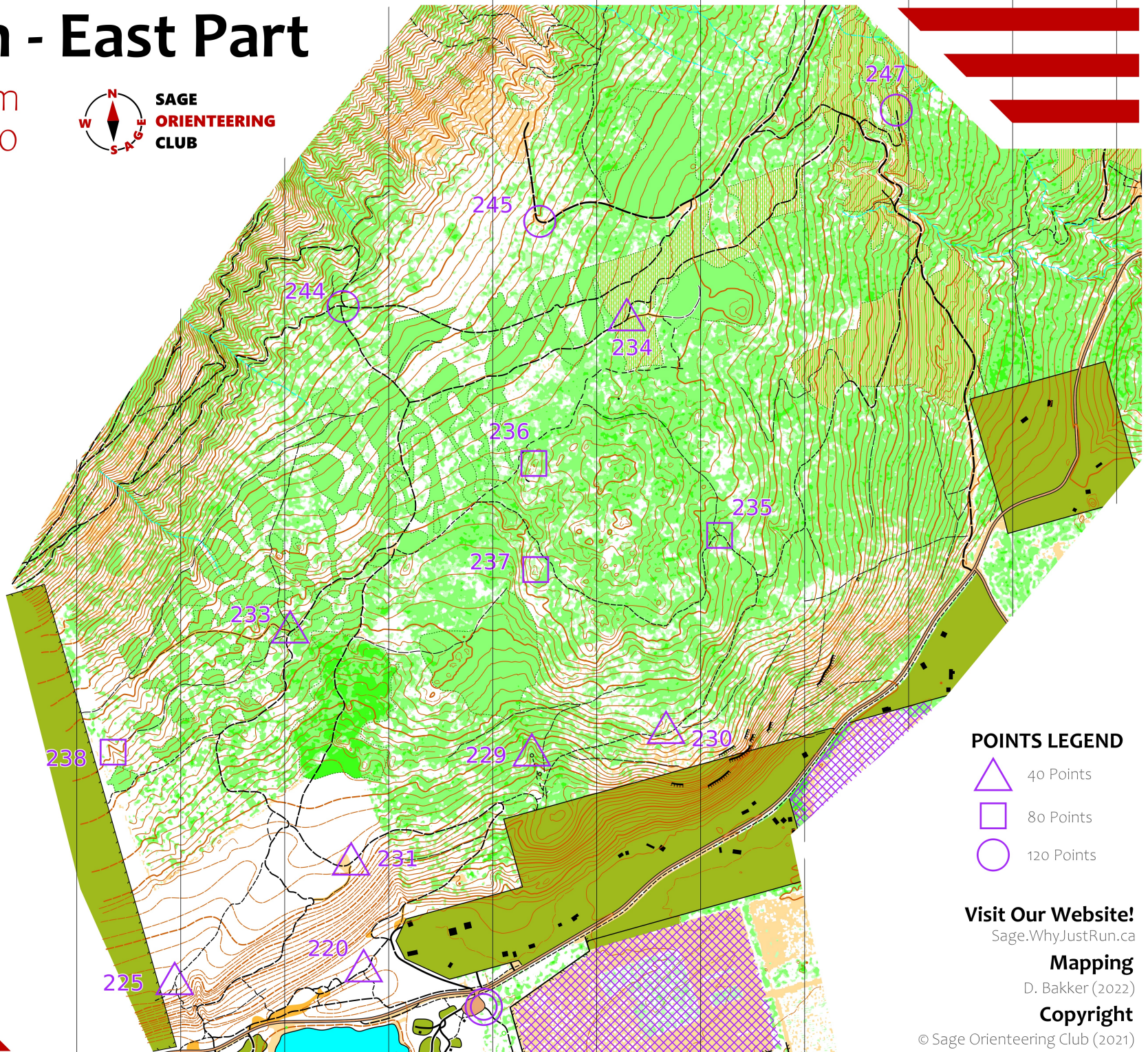
- 220 - Trail Junction
- 221 - Trail Junction
- 222 - Trail Junction
- 223 - Trail Junction
- 224 - Indistinct Junction
- 225 - Indistinct Junction
- 226 - Trail/Hilltop
- 227 - Trail Bend
- 228 - Road Crossing
- 229 - Manmade Feature
- 230 - Slight Trail Bend
- 231 - Road/Trail Junction
- 233 - Road/Skid Junction
- 234 - Trail/Ride Junction

80 POINTERS

- 235 - Trail/Ride Junction
- 236 - Hilltop
- 237 - Hilltop
- 238 - Re-Entrant (Gully)
- 239 - Indistinct Junction
- 240 - Trail Bend
- 241 - Dead Car

120 POINTERS

- 242 - Small Hilltop
- 243 - North Edge of Hill
- 244 - Trail Junction
- 245 - Road Bend
- 247 - End of Road



POINTS LEGEND

- 40 Points
- 80 Points
- 120 Points

Visit Our Website!

Sage.WhyJustRun.ca

Mapping

D. Bakker (2022)

Copyright

© Sage Orienteering Club (2021)