

Mount MacPherson

Revelstoke Classic Day 2
October 6, 2019

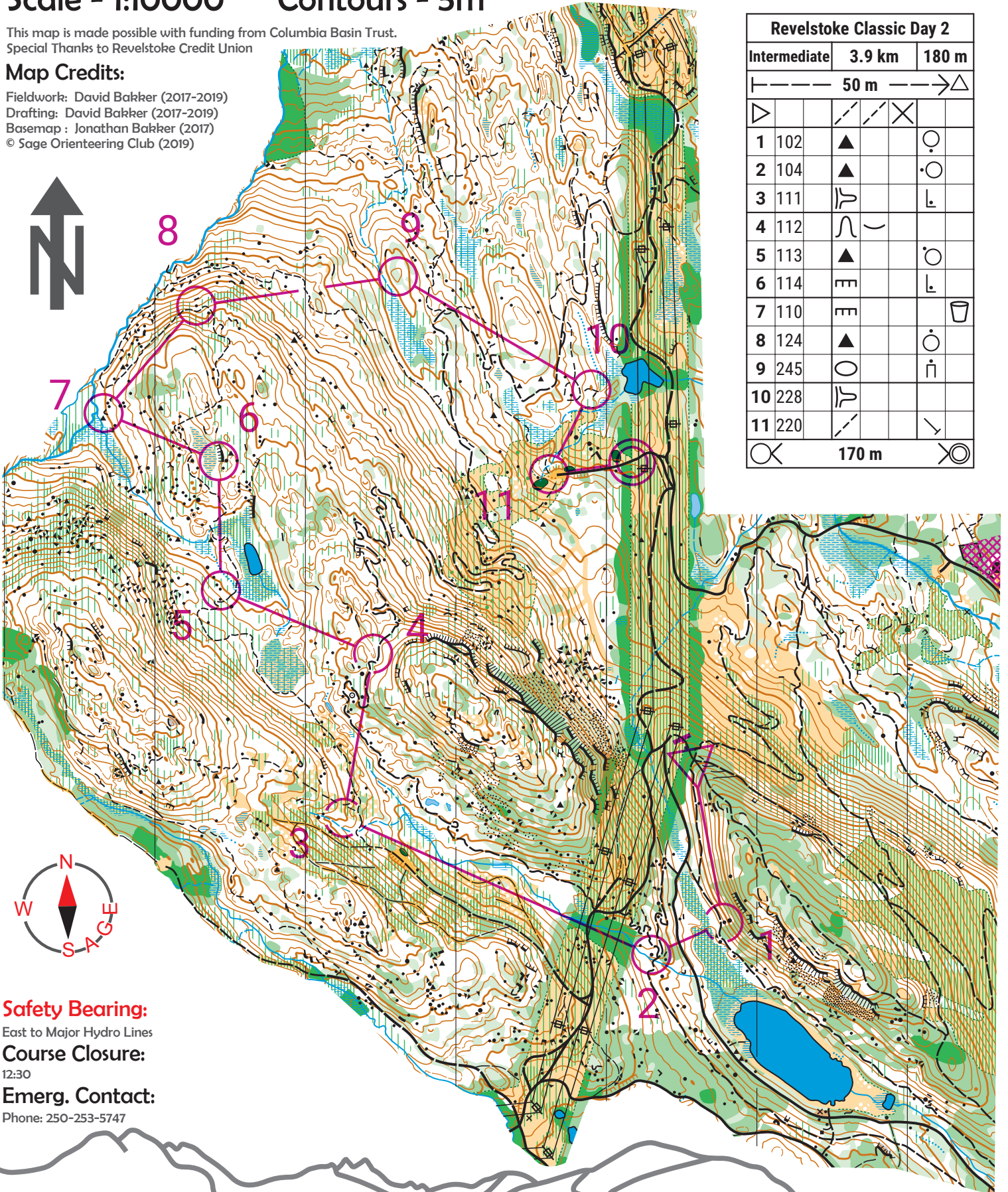
Scale - 1:10000 Contours - 5m

This map is made possible with funding from Columbia Basin Trust.
Special Thanks to Revelstoke Credit Union

Map Credits:

Fieldwork: David Bakker (2017-2019)
Drafting: David Bakker (2017-2019)
Basemap: Jonathan Bakker (2017)
© Sage Orienteering Club (2019)

Revelstoke Classic Day 2				
Intermediate	3.9 km	180 m		
----- 50 m ----->△				
▷		∕ ∕	×	
1	102	▲		○
2	104	▲		○
3	111	∩		⊥
4	112	∩	∩	
5	113	▲		○
6	114	∩		⊥
7	110	∩		⊥
8	124	▲		○
9	245	○		⊥
10	228	∩		
11	220	∕ ∕		∕
		170 m		



Safety Bearing:

East to Major Hydro Lines

Course Closure:

12:30

Emerg. Contact:

Phone: 250-253-5747

Results & Info:

Club Website: Sage.WhyJustRun.ca