

# Mount MacPherson

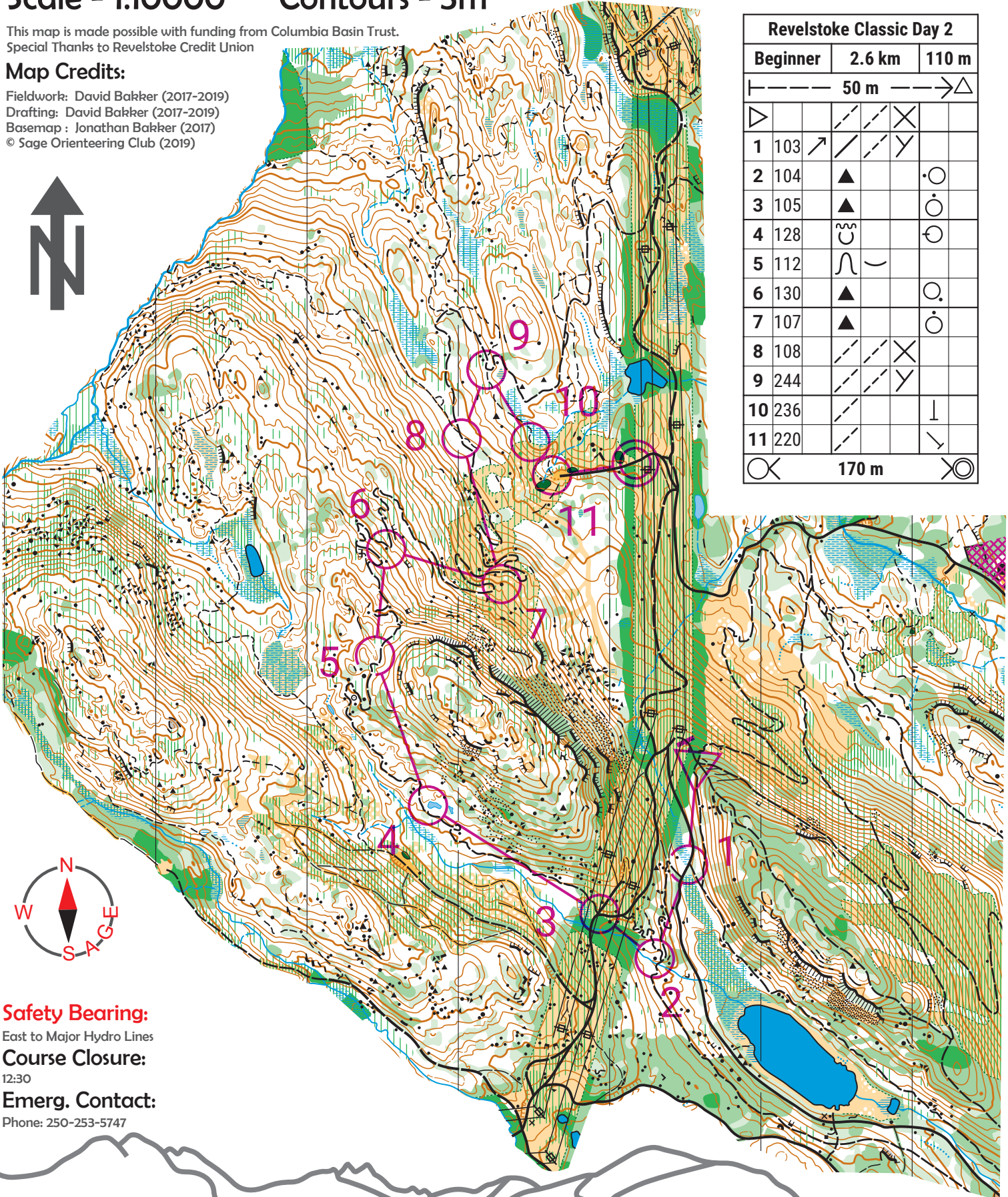
Revelstoke Classic Day 2  
October 6, 2019

Scale - 1:10000      Contours - 5m

This map is made possible with funding from Columbia Basin Trust.  
Special Thanks to Revelstoke Credit Union

## Map Credits:

Fieldwork: David Bakker (2017-2019)  
Drafting: David Bakker (2017-2019)  
Basemap: Jonathan Bakker (2017)  
© Sage Orienteering Club (2019)



Revelstoke Classic Day 2			
Beginner	2.6 km	110 m	
----- 50 m -----  → Δ			
Δ		/ /	X
1	103	/ /	Y
2	104	▲	○
3	105	▲	○
4	128	⋈	○
5	112	∩	
6	130	▲	○
7	107	▲	○
8	108	/ /	X
9	244	/ /	Y
10	236	/ /	I
11	220	/ /	∇
		170 m	○



## Safety Bearing:

East to Major Hydro Lines

## Course Closure:

12:30

## Emerg. Contact:

Phone: 250-253-5747

## Results & Info:

Club Website: Sage.WhyJustRun.ca