

Revelstoke Classic Day 1
October 5, 2019

Mount MacPherson

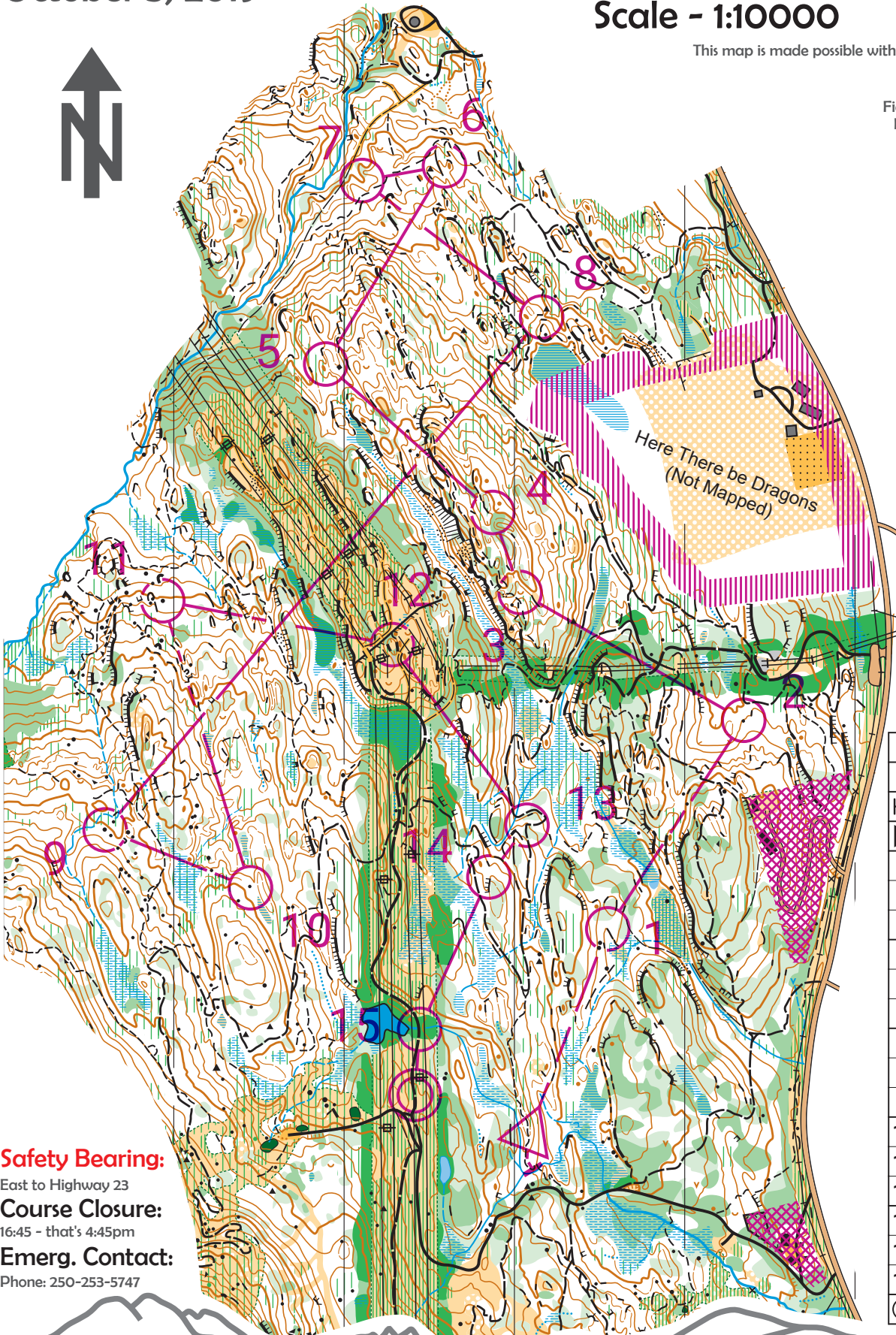
Scale - 1:10000

Contours - 5m

This map is made possible with funding from Columbia Basin Trust.

Map Credits:

Fieldwork: David Bakker (2017-2019)
Drafting: David Bakker (2017-2019)
Basemap : Jonathan Bakker (2017)
© Sage Orienteering Club (2019)



Revelstoke Classic Day 1			
Elite	6.2 km	325 m	
----- 60 m ----->△			
△		⌈	⌈
1 229	⌈		⌈
2 241	▲		○
3 233	U		
4 234)		
5 232	↑	⌈	⌈
6 237	⌈		
7 235	⌈		⌈
8 238	⌈	⌈	⌈
9 242	←	▲	○
10 243	▲		○
11 224	▲		○
12 239	⊖		○
13 222	⌈	<	
14 230	⌈		○
15 220	⌈	⊗	
		120 m	

Safety Bearing:

East to Highway 23

Course Closure:

16:45 - that's 4:45pm

Emerg. Contact:

Phone: 250-253-5747

Results & Info:

Club Website: Sage.WhyJustRun.ca