

Revelstoke Classic Day 1  
October 5, 2019

# Mount MacPherson

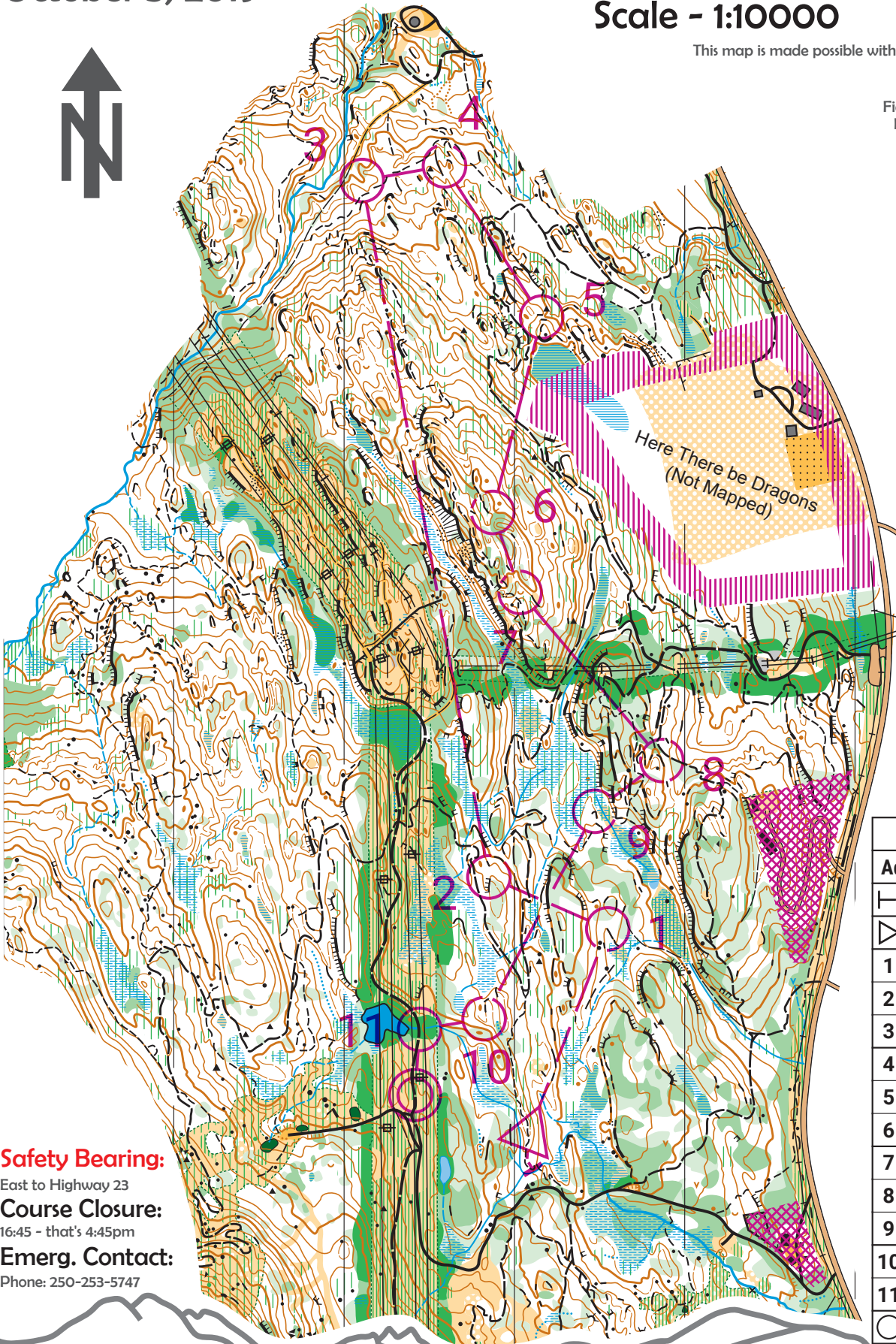
Scale - 1:10000

Contours - 5m

This map is made possible with funding from Columbia Basin Trust.

## Map Credits:

Fieldwork: David Bakker (2017-2019)  
Drafting: David Bakker (2017-2019)  
Basemap: Jonathan Bakker (2017)  
© Sage Orienteering Club (2019)



Revelstoke Classic Day 1			
Advanced	4.1 km	205 m	
----- 60 m ----->△			
△	⌒		⋈
1 229	≡		⊙
2 230	≡		⊙
3 235	∩		∥
4 237	∩		
5 238	≡ ≡		⋈ ☐
6 234	∪		
7 233	∪		
8 231	≡		⋈
9 225	↖ ≡		⊙
10 240	∩		∥
11 220	∕ wavy X		
⊙	120 m		⊙

### Safety Bearing:

East to Highway 23

### Course Closure:

16:45 - that's 4:45pm

### Emerg. Contact:

Phone: 250-253-5747

### Results & Info:

Club Website: Sage.WhyJustRun.ca