

Revelstoke Classic Day 1  
 October 5, 2019

# Mount MacPherson

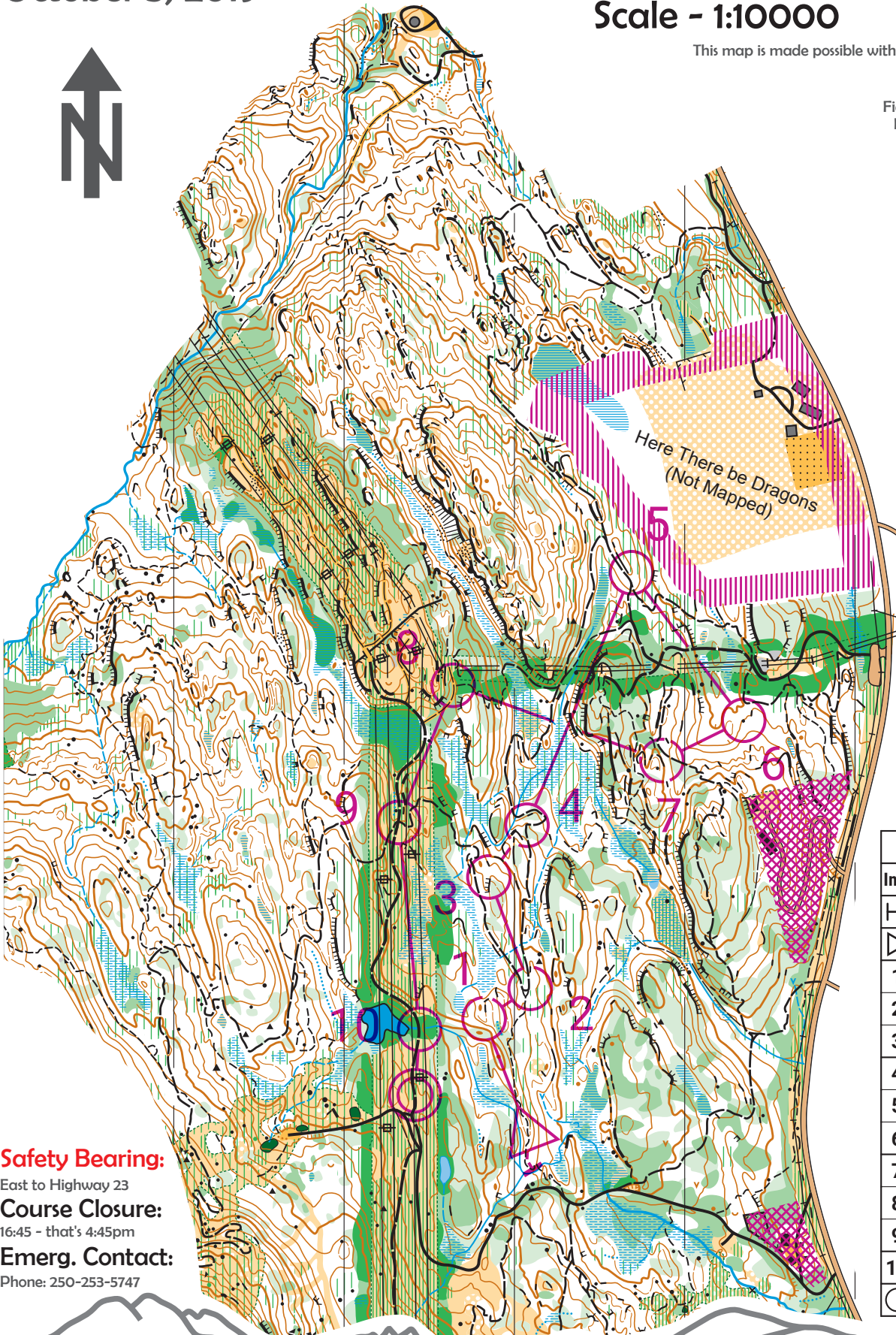
Scale - 1:10000

Contours - 5m

This map is made possible with funding from Columbia Basin Trust.

## Map Credits:

Fieldwork: David Bakker (2017-2019)  
 Drafting: David Bakker (2017-2019)  
 Basemap: Jonathan Bakker (2017)  
 © Sage Orienteering Club (2019)



Revelstoke Classic Day 1			
Intermediate	2.8 km	135 m	
----- 60 m ----->△			
△	⌋		ñ
1 240	∩		ñ
2 221	→ / /	Y	
3 230	≡		ò
4 222	/ /	<	
5 226	○		○
6 241	▲		○
7 231	≡		⊥
8 227	⋯ / /	Y	
9 228	/ /	X	
10 220	/ /	⊗	
⊗	120 m		⊗

### Safety Bearing:

East to Highway 23

### Course Closure:

16:45 - that's 4:45pm

### Emerg. Contact:

Phone: 250-253-5747

### Results & Info:

Club Website: Sage.WhyJustRun.ca