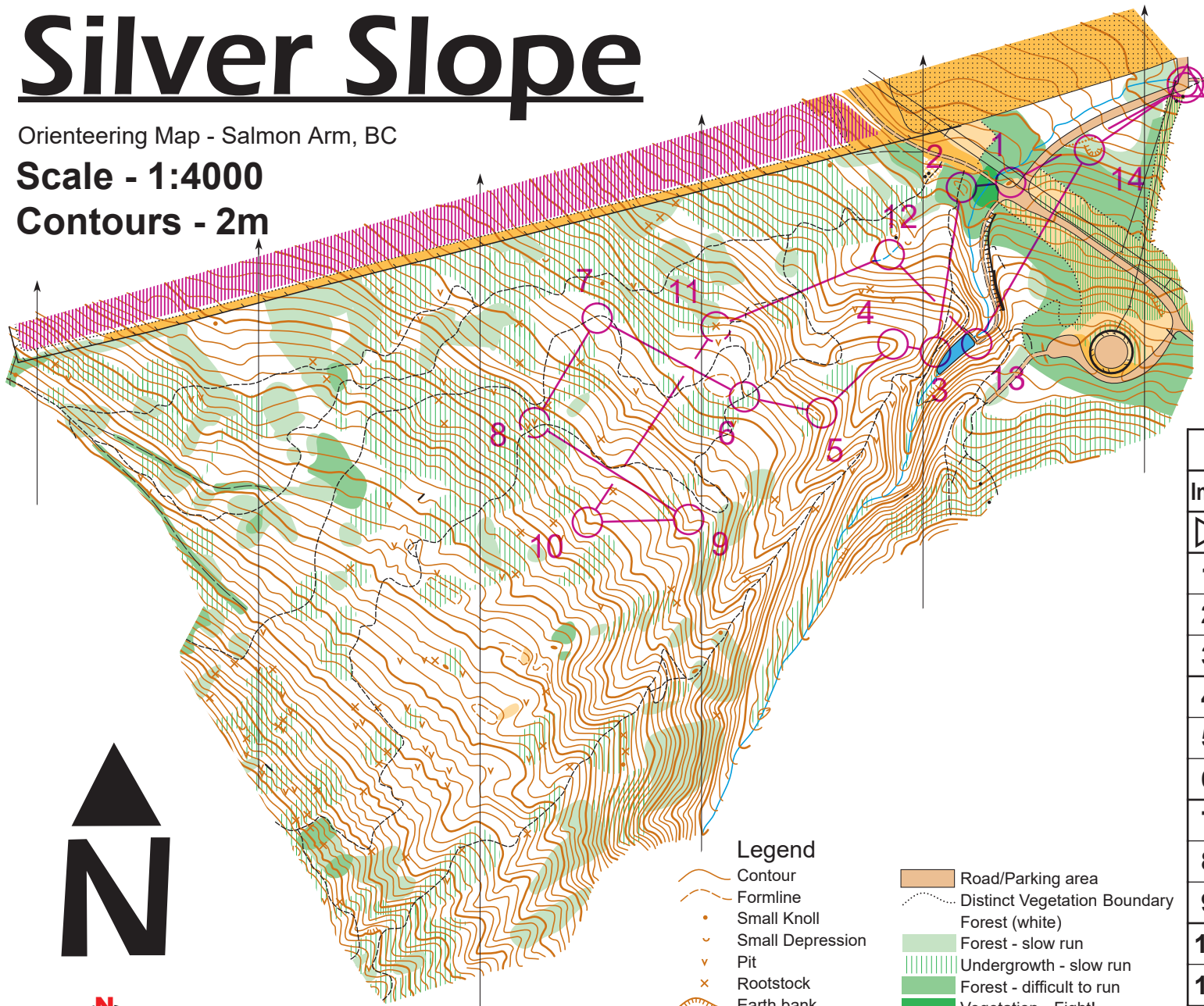


# Silver Slope

Orienteering Map - Salmon Arm, BC

Scale - 1:4000

Contours - 2m



**open orienteering**

### Legend

- Contour
- Road/Parking area
- - - Formline
- - - Distinct Vegetation Boundary
- Small Knoll
- Forest (white)
- v Small Depression
- Forest - slow run
- P Pit
- Undergrowth - slow run
- x Rootstock
- Forest - difficult to run
- Earth bank
- Vegetation - Fight!
- Boulders
- Fence
- Cliff (Passable)
- Small Powerline
- Cliff (Impassable)
- Major Powerline
- Creek
- Trail
- Pond
- Indistinct Trail
- Smooth Open Ground
- Old Skid Trail
- Rough Open Ground
- Out of Bounds
- Cultivated Land

Silver Slope Spring 2018				
Intermediate	1.4 km			
▷		/ / \		
1 222	•			
2 240	○	⌒		⋈
3 225		/ / \		
4 223		⌒		
5 224		⌒		
6 226		/ / \		
7 228		/ / \		<
8 245	↗	v		
9 227		⌒		
10 233		⌒		
11 230		⊗		○
12 231		⌒		
13 220		⌒		>
14 232		⌒		⌒
		80 m		

For Info And Upcoming Events:  
Sage.WhyJustRun.ca

Fieldwork and Cartography: David Bakker (2017-2018)  
This Map Conforms to ISSOM (2007)  
© Sage Orienteering Club (2018)