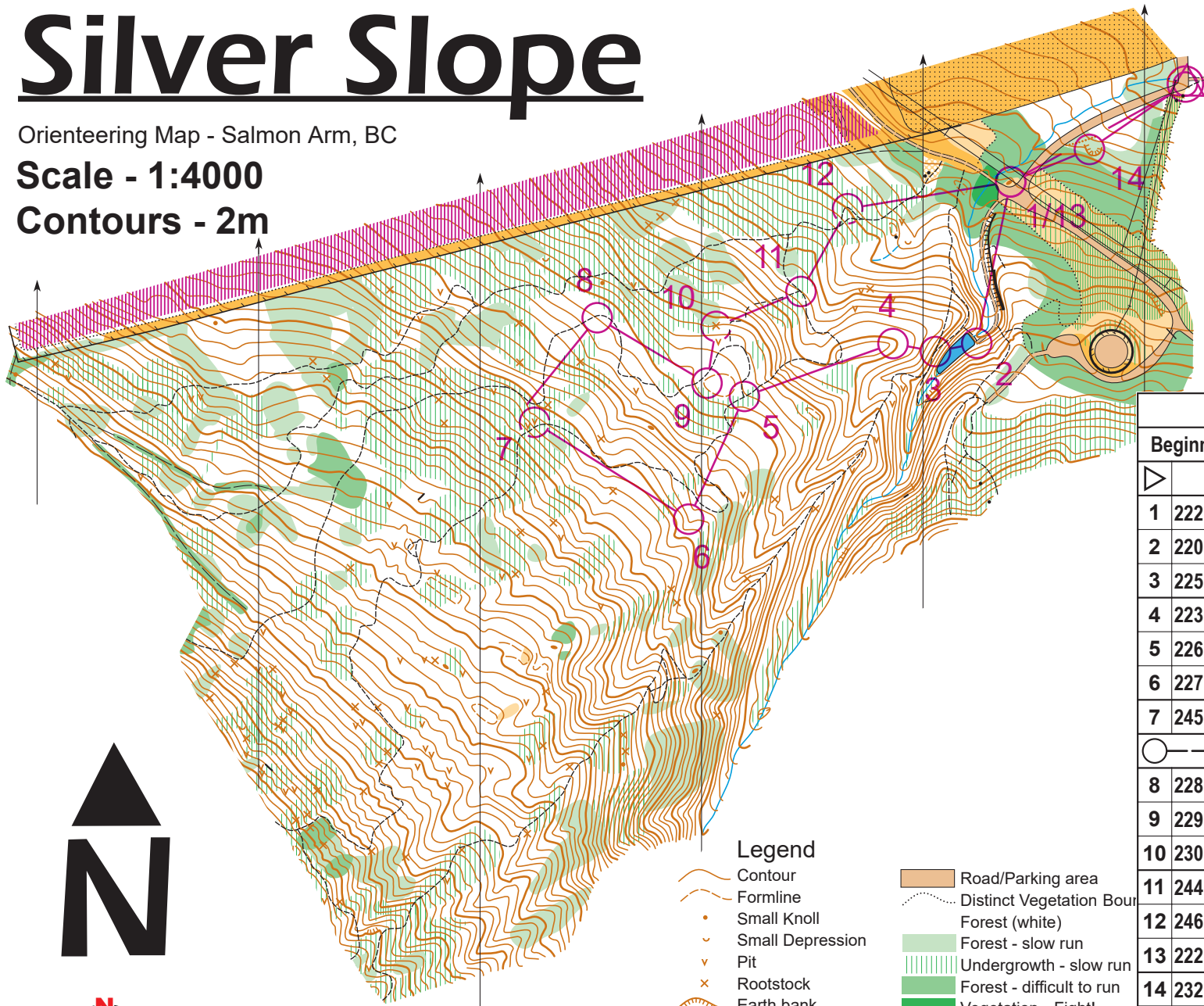


# Silver Slope

Orienteering Map - Salmon Arm, BC

Scale - 1:4000

Contours - 2m



Silver Slope Spring 2018				
Beginner	1.2 km			
				Start: road and path junction
1 222				Knoll
2 220				E outside corner of pond
3 225				Path junction
4 223				Spur
5 226				Path junction
6 227				Reentrant
7 245				NE pit
	10 m			Follow tapes 10 m away from control
8 228				Bend in path
9 229				W edge of hill
10 230				S side of root stock
11 244				Path junction
12 246				Bend in path
13 222				Knoll
14 232				Foot of earth bank
	80 m			Navigate 80 m to finish

## Legend

- Contour
- Road/Parking area
- Formline
- Distinct Vegetation Boundary
- Small Knoll
- Forest (white)
- Small Depression
- Forest - slow run
- Pit
- Undergrowth - slow run
- Rootstock
- Forest - difficult to run
- Earth bank
- Vegetation - Fight!
- Boulders
- Fence
- Cliff (Passable)
- Small Powerline
- Cliff (Impassable)
- Major Powerline
- Creek
- Trail
- Pond
- Indistinct Trail
- Smooth Open Ground
- Old Skid Trail
- Rough Open Ground
- Out of Bounds
- Cultivated Land



open  
orienteering

For Info And Upcoming Events:  
Sage.WhyJustRun.ca

Fieldwork and Cartography: David Bakker (2017-2018)  
This Map Conforms to ISSOM (2007)  
© Sage Orienteering Club (2018)