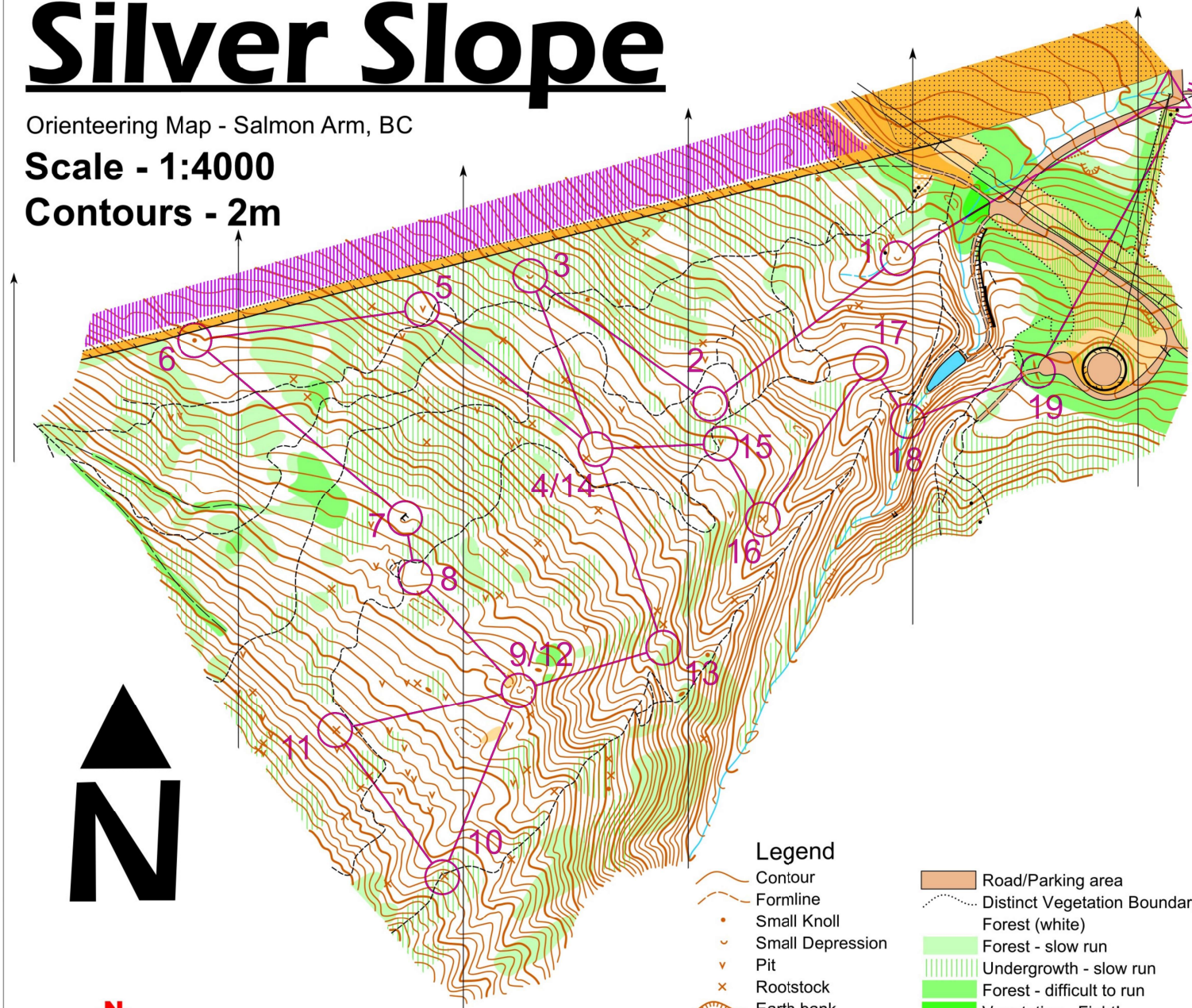


Silver Slope

Orienteering Map - Salmon Arm, BC

Scale - 1:4000

Contours - 2m



open orienteering

- Legend**
- Contour
 - Formline
 - Small Knoll
 - Small Depression
 - Pit
 - Rootstock
 - Earth bank
 - Boulders
 - Cliff (Passable)
 - Cliff (Impassable)
 - Creek
 - Pond
 - Smooth Open Ground
 - Rough Open Ground
 - Cultivated Land
 - Road/Parking area
 - Distinct Vegetation Boundary
 - Forest (white)
 - Forest - slow run
 - Undergrowth - slow run
 - Forest - difficult to run
 - Vegetation - Fight!
 - Fence
 - Small Powerline
 - Major Powerline
 - Trail
 - Indistinct Trail
 - Old Skid Trail
 - Out of Bounds

Silver Slope 17-09-07			
	Long	2.5 km	175 m
▷			
1	222	U	
2	225	O	
3	224	U	
4	232	∩	
5	229	V	
6	233	•	
7	230	≡	
8	231	∩	
9	238	∩	
10	234	⊗	
11	235	⊗	
12	238	∩	
13	236	≡	
14	232	∩	
15	226	V	
16	237	⊗	
17	221	O	
18	227	≡ X	
19	228	≡	
		200 m	

For Info And Upcoming Events:
Sage.WhyJustRun.ca

Fieldwork and Cartography: David Bakker (2017)
This Map Conforms to ISSOM (2007)
© Sage Orienteering Club (2017)