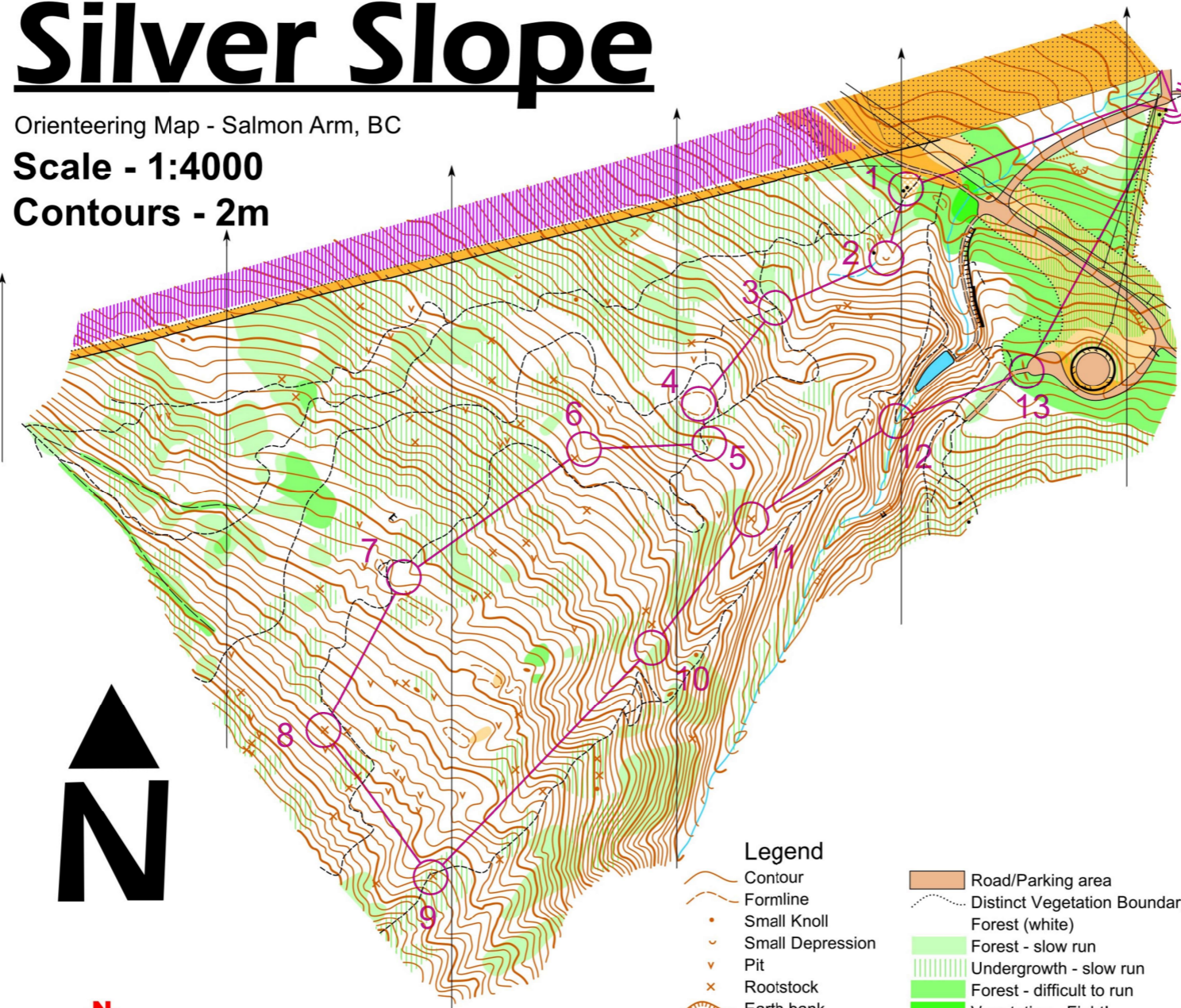


Silver Slope

Orienteering Map - Salmon Arm, BC

Scale - 1:4000

Contours - 2m



open orienteering

- Legend**
- Contour
 - Formline
 - Small Knoll
 - Small Depression
 - Pit
 - Rootstock
 - Earth bank
 - Boulders
 - Cliff (Passable)
 - Cliff (Impassable)
 - Creek
 - Pond
 - Smooth Open Ground
 - Rough Open Ground
 - Cultivated Land
 - Road/Parking area
 - Distinct Vegetation Boundary
 - Forest (white)
 - Forest - slow run
 - Undergrowth - slow run
 - Forest - difficult to run
 - Vegetation - Fight!
 - Fence
 - Small Powerline
 - Major Powerline
 - Trail
 - Indistinct Trail
 - Old Skid Trail
 - Out of Bounds

Silver Slope 17-09-07			
	Short	1.6 km	170 m
▷			
1	220	▲	
2	222	∪	
3	223	∕ ∕ Y	
4	225	○	
5	226	∨	
6	232	∩	
7	231	∩	
8	235	⊗	
9	234	⊗	
10	236	∩	
11	237	⊗	
12	227	∕ ∕ X	
13	228	∕ ∕ X	

○ ⊗ 200 m ⊗ ○

For Info And Upcoming Events:
Sage.WhyJustRun.ca

Fieldwork and Cartography: David Bakker (2017)
 This Map Conforms to ISSOM (2007)
 © Sage Orienteering Club (2017)