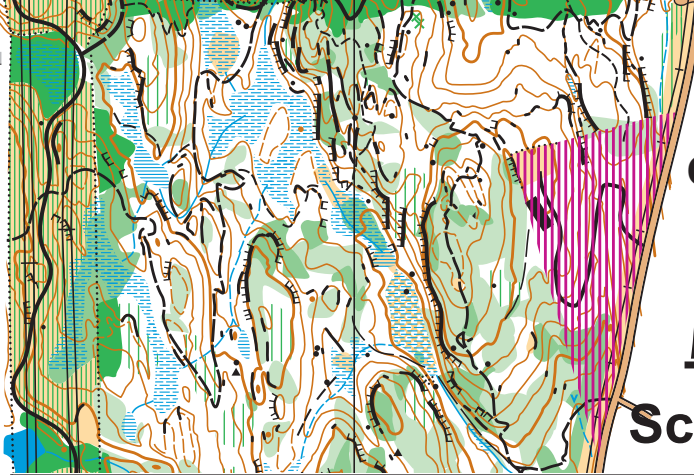


Revelstoke, BC
Orienteering Map

Mount

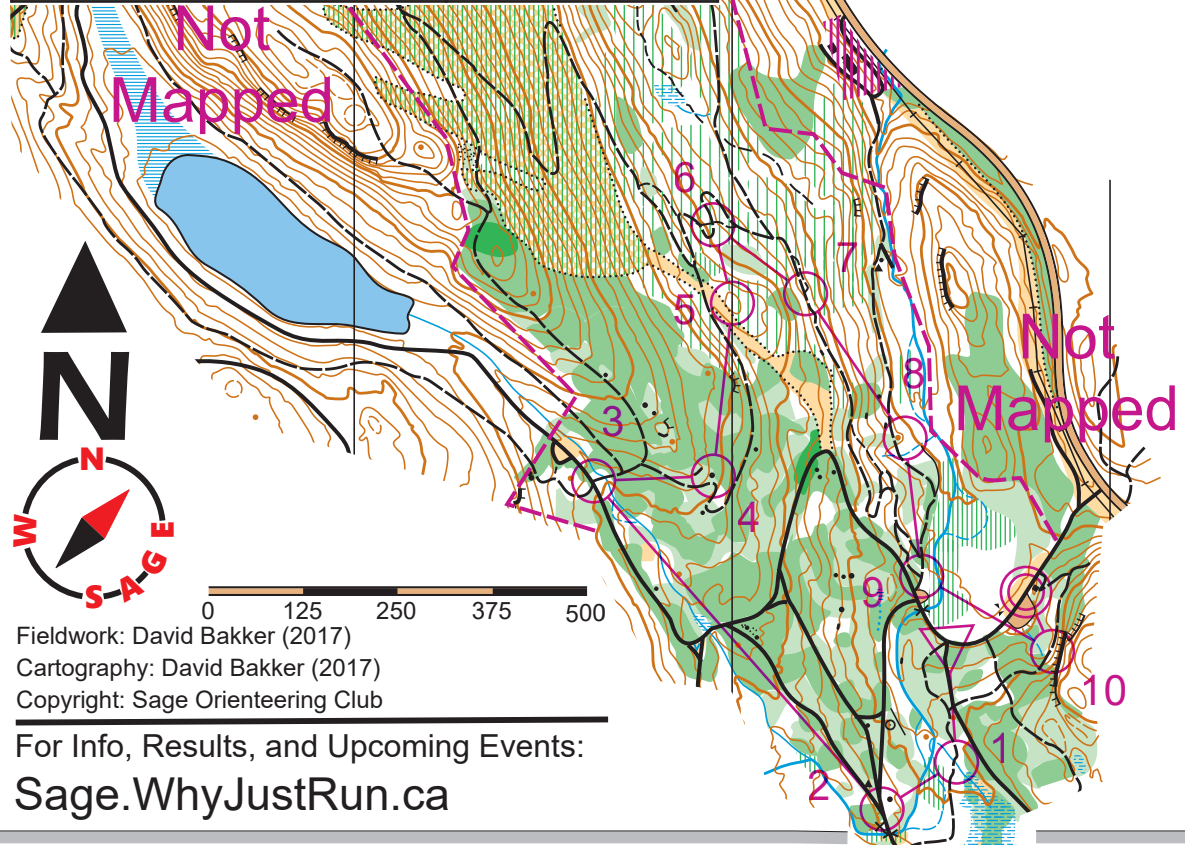
MacPherson

Scale: 1:10000 Contours: 5 Meters



Mount MacPherson 2017					
Short Beginner	2.2 km				
					Start: road junction
1	220				Path and stream junction
2	221				S road junction
3	223				Road and path crossing
4	229				SW side of boulder
5	224				Top of hill
6	225				Path crossing
7	226				Path junction
8	227				Spur
9	228				Middle path junction
10	230				Foot of cliff
	90 m				Navigate 90 m to finish

- LEGEND
- Contour
 - Formline
 - Knolls
 - Depression
 - Small Depression
 - Pit
 - Earth bank
 - Erosion Gulleys
 - Stony ground
 - Boulders - single, cluster
 - Smooth open land
 - Open scattered trees
 - Rough open land
 - Rough open scattered trees
 - Forest (white)
 - Forest -slow run
 - Undergrowth -slow run
 - Forest -difficult to run
 - Undergrowth -difficult to run
 - Vegetation -Fight!
 - Tree or shrub
 - Lake/Pond
 - Marsh - distinct, indistinct
 - Narrow Marsh
 - Creek
 - Paved Road
 - Unpaved Road
 - Surfaced area (paved or gravel)
 - Wide track or vehicle track
 - Footpath
 - Small path
 - Indistinct path
 - Cutline (old skid tracks)
 - Buildings
 - Manmade features
 - Out of bounds



Fieldwork: David Bakker (2017)
Cartography: David Bakker (2017)
Copyright: Sage Orienteering Club

For Info, Results, and Upcoming Events:
Sage.WhyJustRun.ca